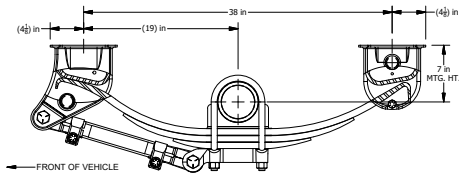
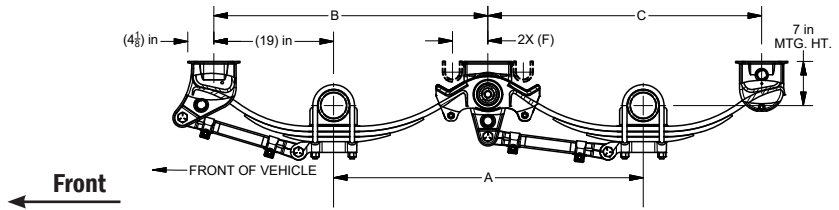


SINGLE

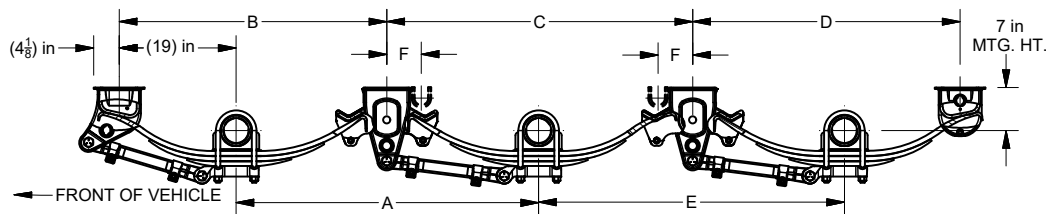


TANDEM



Axle Spacing	A	B	C	F
49 in	49 3/16 in	43 1/2 in	43 1/2 in	N/A
54 in	54 7/32 in	46 1/32 in	46 7/32 in	8 3/8 in
60 in	60 7/32 in	49 1/32 in	49 7/32 in	11 15/32 in

TRIPLE



Axle Spacing	A	B	C	D	E	F
49 in	49 3/16 in	43 1/2 in	49 3/4 in	43 1/2 in	49 3/4 in	N/A
54 in	54 7/32 in	46 1/32 in	54 3/4 in	46 7/32 in	54 3/4 in	8 3/8 in
60 in	60 7/32 in	49 1/32 in	60 3/4 in	49 7/32 in	60 3/4 in	11 15/32 in

10-25K Single Axle Kit Contents

Part No.	Qty	Description
028-082-05	2	Front Hanger
030-075-05	2	Rear Hanger
062-010-10	1	Track Rod Bushed Adj 19.25
062-011-10	1	Track Rod Bushed Fixed 19.25
007-169-00	4	Track Rod Bolt 1-8 x 5.50 UNC
006-278-00	4	Track Rod Locknut 1-8 UNC
033-091-00	2	Keeper Bolt Sleeve
007-294-00	2	Spring Keeper Bolt 5/8-18 x 4.50 UNF
006-126-00	2	Keeper Bolt Locknut 5/8-18 UNF
059-918-00	1	Instruction Sheet

10-25K Multi Axle Kit Contents

Part No.	Qty	Description	Axle Spacing
029-044-10	2	Center Hanger and EQ Assembly HAP-261-01	49"
062-010-10	1	Track Rod Bushed Adj 19.25	49"
062-011-10	1	Track Rod Bushed Fixed 19.25	49"
029-049-10	2	Center Hanger and EQ Assembly HAP-162-01	54"
062-010-54	1	Track Rod Bushed Adj 21.75	54"
062-011-54	1	Track Rod Bushed Fixed 21.75	54"
029-049-20	2	Center Hanger and EQ Assembly HAP-163-01	60"
062-010-60	1	Track Rod Bushed Adj. 24.75	60"
062-011-60	1	Track Rod Bushed Fixed 24.75	60"
007-169-00	4	Track Rod Bolt 1-8 x 5.50 UNC	-
006-278-00	4	Track Rod Locknut 1-8 UNC	-
033-091-00	4	Keeper Bolt Sleeve	-
007-294-00	4	Spring Keeper Bolt 5/8-18 x 4.50 UNF	-
006-126-00	4	Keeper Bolt Locknut 5/8-18 UNF	-
059-918-00	1	Instruction Sheet	-

Suspension Kits

Order appropriate number of HAP kits for a complete suspension

HDSS Underslung			
	49"	HAP-161-01	HAP-261-01
Qty for Single	1		n/a
Qty for Tandem	1		1
Qty for Triple	1		2
	54"	HAP-161-01	HAP-162-01
Qty for Single	1		n/a
Qty for Tandem	1		1
Qty for Triple	1		2
	60"	HAP-161-01	HAP-163-01
Qty for Single	1		n/a
Qty for Tandem	1		1
Qty for Triple	1		2

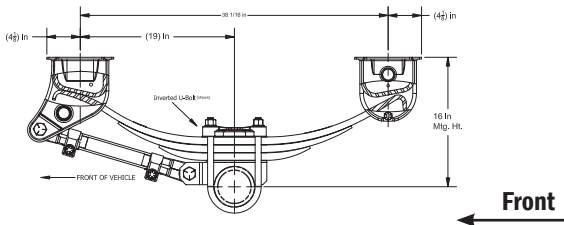
OPTIONAL KITS - Per Axle

HAP-166-00 Bump Stops (One Pair)

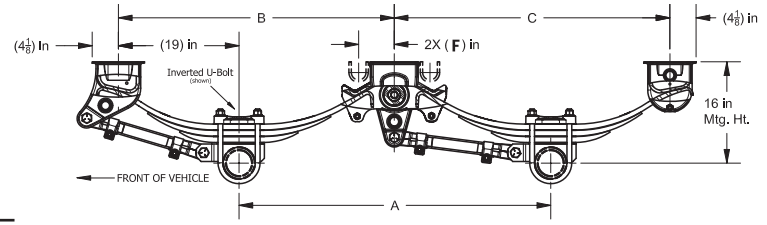
HDSS Overslung



SINGLE

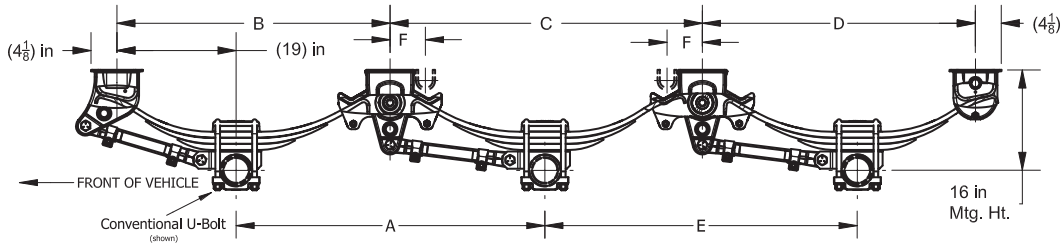


TANDEM



Axle Spacing	A	B	C	F
49 in	49 in	43 1/2 in	43 1/2 in	5 5/8 in
54 in	54 3/16 in	46 1/16 in	46 in	8 3/8 in
60 in	60 3/16 in	49 1/16 in	49 in	11 7/16 in

TRIPLE



Axle Spacing	A	B	C	D	E	F
49 in	49 3/16 in	43 1/2 in	49 3/4 in	43 1/2 in	49 3/4 in	5 5/8 in
54 in	54 3/16 in	46 1/16 in	54 3/4 in	46 in	54 3/4 in	8 3/8 in
60 in	60 3/16 in	49 1/16 in	60 3/4 in	49 in	60 3/4 in	11 7/16 in

10-25K Single Axle Kit Contents

Part No.	Qty	Description
028-082-05	2	Front Hanger
030-075-05	2	Rear Hanger
062-010-10	1	Track Rod Bushed Adj 19.25
062-011-10	1	Track Rod Bushed Fixed 19.25
007-169-00	4	Track Rod Bolt 1-8 x 5.50 UNC
006-278-00	4	Track Rod Locknut 1-8 UNC
033-091-00	2	Keeper Bolt Sleeve
007-294-00	2	Spring Keeper Bolt 5/8-18 x 4.50 UNF
006-126-00	2	Keeper Bolt Locknut 5/8-18 UNF
059-918-00	1	Instruction Sheet

10-25K Multi Axle Kit Contents

Part No.	Qty	Description	Axle Spacing
029-044-10	2	Center Hanger and EQ Assembly HAP-261-01	49"
062-010-10	1	Track Rod Bushed Adj 19.25	49"
062-011-10	1	Track Rod Bushed Fixed 19.25	49"
029-049-10	2	Center Hanger and EQ Assembly HAP-162-01	54"
062-010-54	1	Track Rod Bushed Adj 21.75	54"
062-011-54	1	Track Rod Bushed Fixed 21.75	54"
029-049-20	2	Center Hanger and EQ Assembly HAP-163-01	60"
062-010-60	1	Track Rod Bushed Adj. 24.75	60"
062-011-60	1	Track Rod Bushed Fixed 24.75	60"
007-169-00	4	Track Rod Bolt 1-8 x 5.50 UNC	-
006-278-00	4	Track Rod Locknut 1-8 UNC	-
033-091-00	4	Keeper Bolt Sleeve	-
007-294-00	4	Spring Keeper Bolt 5/8-18 x 4.50 UNF	-
006-126-00	4	Keeper Bolt Locknut 5/8-18 UNF	-
059-918-00	1	Instruction Sheet	-

Suspension Kits

Order appropriate number of HAP kits for a complete suspension

	HDSS Overslung	
	49"	60"
	HAP-161-01	HAP-261-01
Qty for Single	1	n/a
Qty for Tandem	1	1
Qty for Triple	1	2
	HAP-161-01	HAP-162-01
Qty for Single	1	n/a
Qty for Tandem	1	1
Qty for Triple	1	2
	HAP-161-01	HAP-163-01
Qty for Single	1	n/a
Qty for Tandem	1	1
Qty for Triple	1	2

OPTIONAL KITS - Per Axle

HAP-164-01 Attaching Parts Kit - Inverted U-Bolts (Spring Seats, Tie Plates, and Attaching Hardware)

HAP-165-01 Attaching Parts Kit - Conventional U-Bolts (Spring Seats, Tie Plates, and Attaching Hardware)

HAP-166-00 Bump Stops (One Pair)