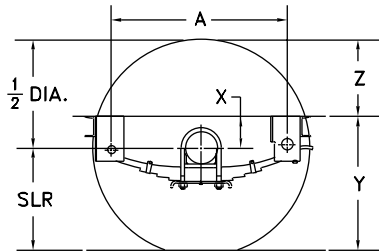


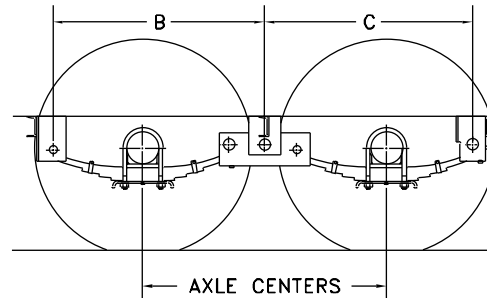
10K REGULAR DUTY INSTALLATION INSTRUCTIONS

NOTE: SEE CROSS FRAME HANGER REINFORCEMENT DRAWING FOR RECOMMENDED ADDITIONAL FRAME / STRUCTURE REINFORCEMENT. (REFER TO BACK OF SHEET)

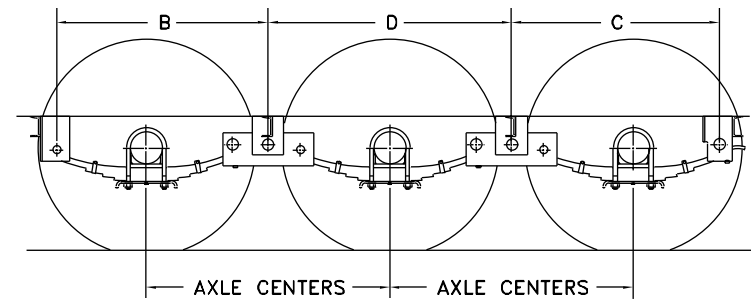
FRONT TYP.



SINGLE



TANDEM



TRIPLE

OPTIONS TO THE BELOW CHARTED HANGER KITS AND AP KITS

SINGLE AXLE REQUIRES ONE HAP-157-00 SINGLE HANGER & AP KIT
 TANDEM AXLE REQUIRES ONE HAP-157-00 SINGLE HANGER & AP KIT PLUS ONE OF THE FOLLOWING:
 HAP-257-01 MULTI-AXLE CONVERSION(38" AXLE CENTERS)
 HAP-257-02 MULTI-AXLE CONVERSION(42 1/4" AXLE CENTERS)
 HAP-257-03 MULTI-AXLE CONVERSION(48 1/2" AXLE CENTERS)
 TRIPLE AXLE REQUIRES ONE HAP-157-00 SINGLE HANGER & AP KIT PLUS TWO OF THE FOLLOWING:
 HAP-257-01 MULTI-AXLE CONVERSION(38" AXLE CENTERS)
 HAP-257-02 MULTI-AXLE CONVERSION(42 1/4" AXLE CENTERS)
 HAP-257-03 MULTI-AXLE CONVERSION(48 1/2" AXLE CENTERS)

SPRING DATA					DIMENSIONS USING HAP KITS, HAP-157-00; HAP-257-01; HAP-257-02; HAP-257-03 *										
OLD NO.	NEW DWG. NO.	NEW NO.	LOADED ARCH HEIGHT	PACK HEIGHT	A	38" AXLE CENTERS			42.25" AXLE CENTERS			48.50" AXLE CENTERS			DIMENSION X (FRAME TO SPINDLE ϕ)
						B	C	D	B	C	D	B	C	D	STRAIGHT UNDERSLUNG
---	072-077-00	---	2.70	2.143	27.44	33.00	32.44	38.00	35.12	34.56	42.25	38.25	37.69	48.50	4.99

NOTES:

1. ALL DIMENSIONS SHOWN ARE IN INCHES AND AT RATED LOAD CONDITION.
2. SLR = STATIC LOADED RADIUS OF TIRE SELECTED.
3. STANDARD THREE INCH STRUCTURAL CHANNEL IS SUGGESTED FOR CROSS FRAME HANGER REINFORCEMENT MEMBERS AS SHOWN.

* IF OTHER AP KITS OR HANGER KITS ARE USED, REFER TO APPROPRIATE RG DRAWING.

TO DETERMINE HEIGHT Y \pm .50 TAKE TIRE SLR + DIMENSION X
 TO DETERMINE HEIGHT Z \pm .50 TAKE 1/2 TIRE DIA. - DIMENSION X

SUSPENSION FASTENER TORQUE VALUES:

SPRING EYE BOLT, EQUALIZER BOLT, AND SHACKLE BOLT TO BE INSTALLED WITH A SNUG FIT ONLY. PARTS MUST ROTATE FREELY. LOCKING NUT ARE PROVIDED TO RETAIN NUT-BOLT ASSEMBLY.

CROSS FRAME HANGER REINFORCEMENT

CROSS FRAME REINFORCEMENT BETWEEN SPRING AND EQUALIZER HANGER BRACKETS ASSURES FULL LOAD CARRYING CAPABILITY OF THE AXLE MOUNTED STRUCTURE.

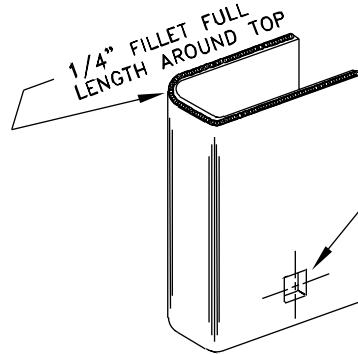
STANDARD THREE INCH STRUCTURAL CHANNEL IS SUGGESTED FOR REINFORCEMENT MEMBERS.

WELDS SHALL BE AS INDICATED.

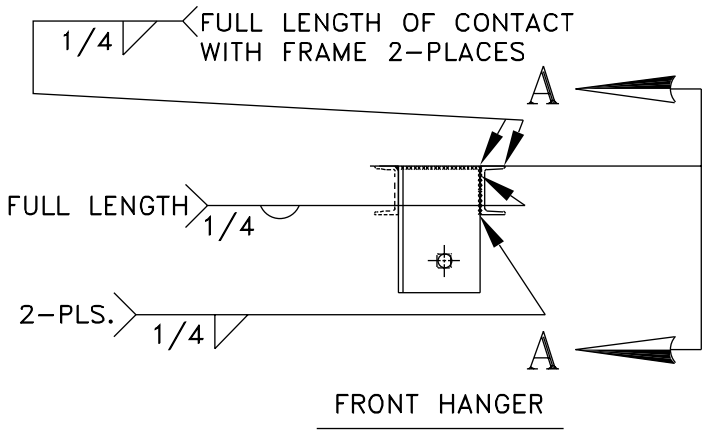
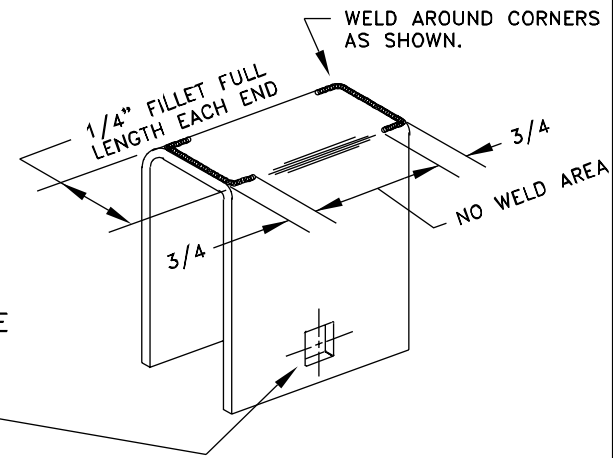
FRONT TYP.



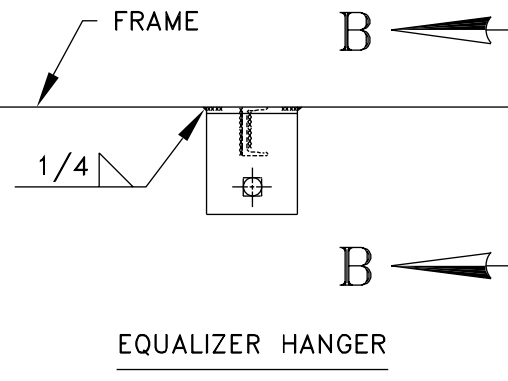
RECOMMENDED FRONT & REAR HANGER WELDING PROCEDURE (FRONT HANGER SHOWN)



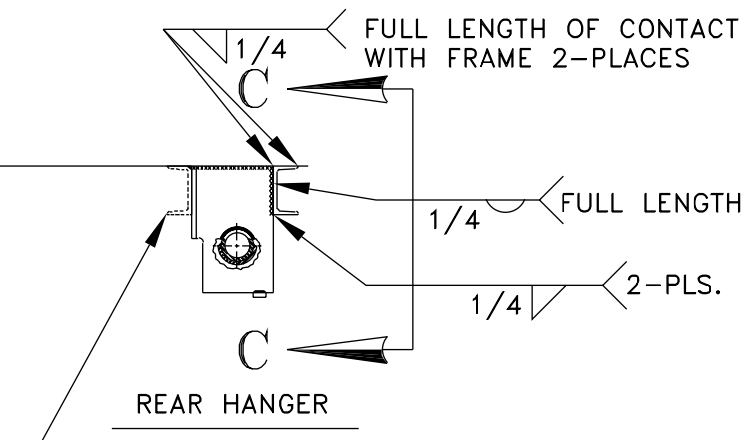
RECOMMENDED EQUALIZER HANGER WELDING PROCEDURE



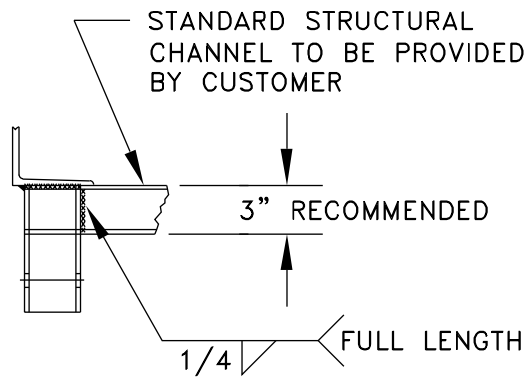
FRONT HANGER



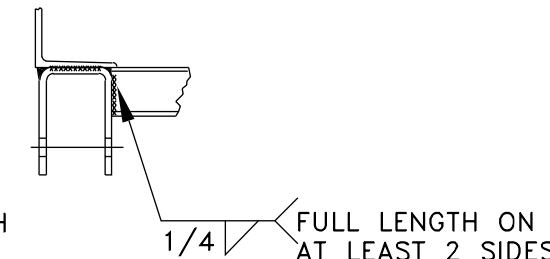
EQUALIZER HANGER



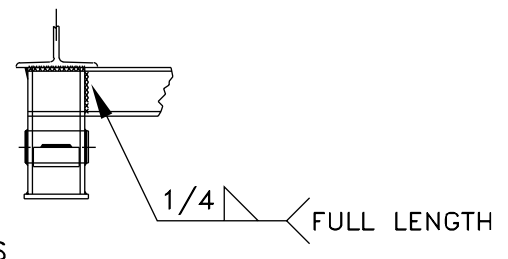
REAR HANGER



VIEW A-A



VIEW B-B



VIEW C-C

STANDARD STRUCTURAL CHANNEL TO BE PROVIDED BY CUSTOMER

3" RECOMMENDED

OPTIONAL LOCATION FOR FRONT AND REAR HANGER REINFORCEMENT TYPICAL.