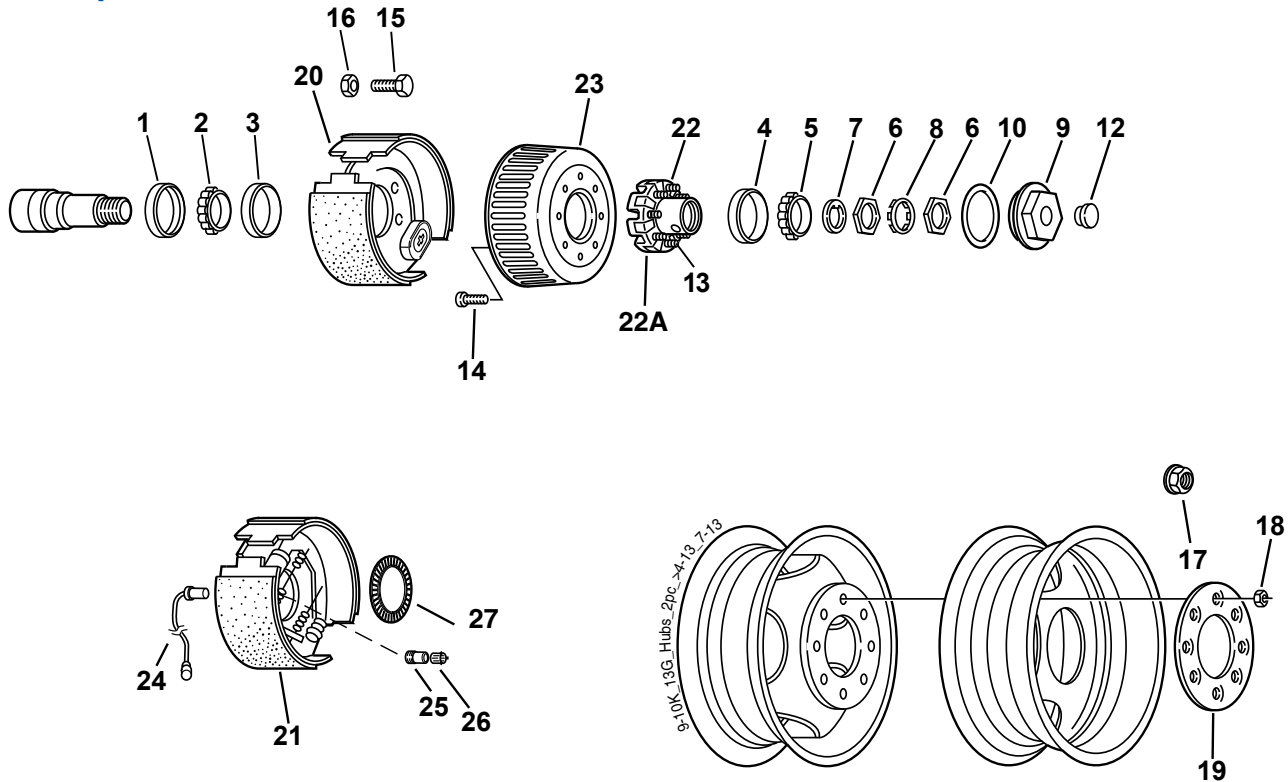


9K, 10K, and #13G General Duty Two-Piece Hub Group



After April 2013



Standard Oil Lube Parts

Item	Part No.	Description
1	010-051-02	Oil Seal
2	031-019-02	387A Inner Bearing Cone
3	031-019-01	382A Inner Bearing Cup
4	031-030-01	25520 Outer Bearing Cup
5	031-030-02	25580 Outer Bearing Cone
6	006-096-00	Spindle Nut (2)
7	005-070-00	Spindle Washer
8	005-071-00	Tang Washer
9	021-088-00	Oil Cap
10	010-163-00	'O' Ring
12	046-032-00	Oil Cap Plug
13	007-115-00	5/8-18 Wheel Stud
14	007-292-00	Drum Mounting Screw
15	007-116-00	Brake Mounting Bolt
16	006-017-00	Brake Mounting Nut
ns	005-008-00	Lockwasher

Hub & Drum

Item	Part No.	Description
ns	008-430-05	Oil Hub and Drum w/Cups and Studs
22	008-430-03	Oil Hub w/Cups and Studs
23	009-123-01	Drum - Machined
ns	008-430-07	Oil Hub and Drum w/Cups and Studs ABS
22	008-430-03	Oil Hub w/Cups and Studs
ns	009-123-03	Drum - for ABS

ns - not shown

12 1/4" x 3 3/8" Brakes

Item	Part No.	Description
20	K23-450-00/K23-451-00	LH/RH Electric, FSA
21	K23-410-00/K23-411-00	LH/RH Hydraulic, FSA, Duo-Servo
21	K23-210-00/K23-211-00	LH/RH Hydraulic, RSA, Du-Servo w/Park
ns	K23-412-00/K23-413-00	LH/RH Hydraulic, FSA, Single-Servo
ns	K23-234-00/K23-235-00	LH/RH Hydraulic, Manual Adjust Single-Servo w/Park

ABS Components

Item	Part No.	Description
24	097-004-00	Sensor, Straight
25	024-204-00	Sensor Block
26	097-002-00	Sensor Clip
27	024-205-01	Tone Ring
ns	007-248-00	Tone Ring Screws

Studs and Wheel Nuts

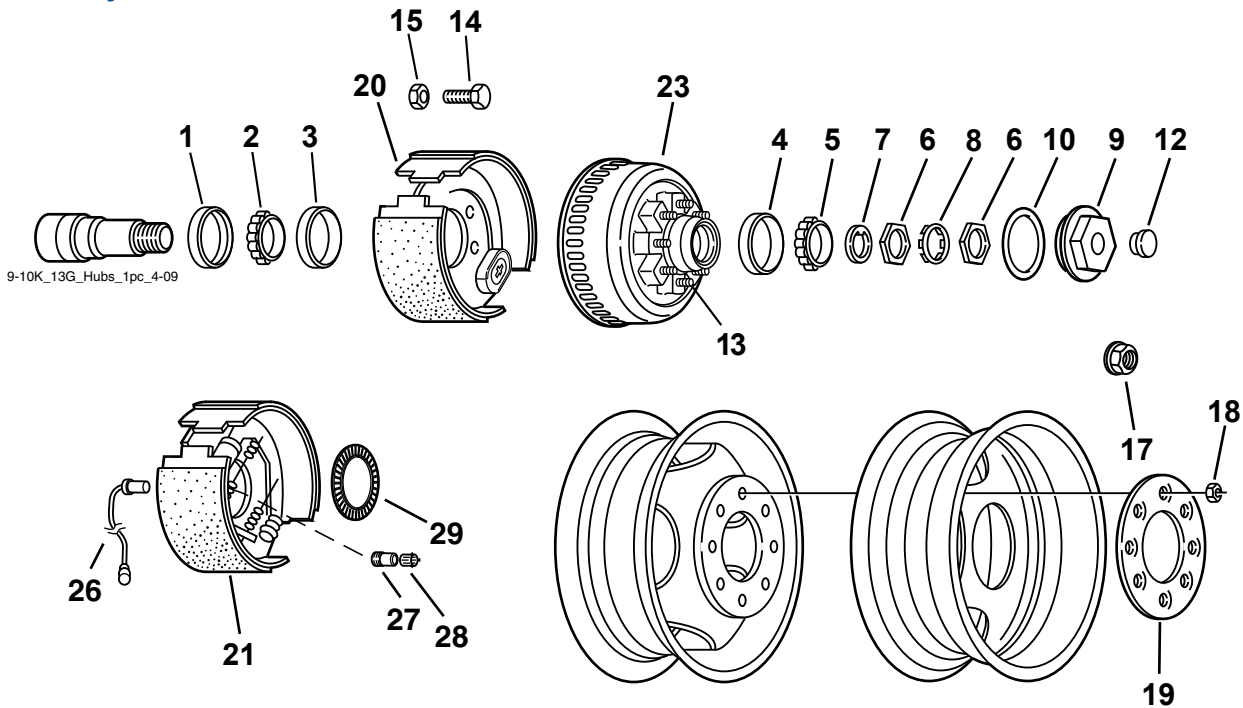
Item	Part No.	Description	Nut Torque
18*	006-109-00	5/8-18 90° Cone Nut	200 lbs.-ft
19*	033-052-01	Clamp Ring	
17	006-058-00	5/8-18 Flange Nut	300 lbs.-ft
13	007-115-00	5/8-18 Press-in Stud	

* Must use the 90° cone nut with the clamp ring. Alternate fastener is just the flange nut.

9K, 10K, and #13G General Duty One-Piece Hub Group



After July 2009



Note: Dual wheel cannot be used with #13G

Standard Oil Lube Parts

Item	Part No.	Description
1	010-051-02	Oil Seal
2	031-019-02	387A Inner Bearing Cone
3	031-019-01	382A Inner Bearing Cup
4	031-030-01	25520 Outer Bearing Cup
5	031-030-02	25580 Outer Bearing Cone
6	006-096-00	Spindle Nut (2)
7	005-070-00	Spindle Washer
8	005-071-00	Tang Washer
9	021-088-00	Oil Cap
10	010-163-00	'O' Ring
12	046-032-00	Oil Cap Plug
13	007-115-00	5/8-18 Wheel Stud
14	007-116-00	Brake Mounting Bolt
15	006-017-00	Brake Mounting Nut
ns	005-008-00	Lockwasher

12 1/4" x 3 3/8" Brakes

Item	Part No.	Description
20	K23-450-00/K23-451-00	LH/RH Electric, FSA
21	K23-410-00/K23-411-00	LH/RH Hydraulic, FSA, Duo-Servo
21	K23-210-00/K23-211-00	LH/RH Hydraulic, RSA, Du-Servo w/Park
ns	K23-412-00/K23-413-00	LH/RH Hydraulic, FSA, Single-Servo
ns	K23-234-00/K23-235-00	LH/RH Hydraulic, Manual Adjust Single-Servo w/Park

ABS Components

Item	Part No.	Description
26	097-004-00	Sensor, Straight
27	024-204-00	Sensor Block
28	097-002-00	Sensor Clip
29	024-205-01	Tone Ring
ns	007-248-00	Tone Ring Screws

Hub & Drum

Item	Part No.	Description
23	008-415-02	Hub & Drum Assembly
ns	008-415-04	Hub & Drum Assembly - ABS

ns - not shown

Studs and Wheel Nuts

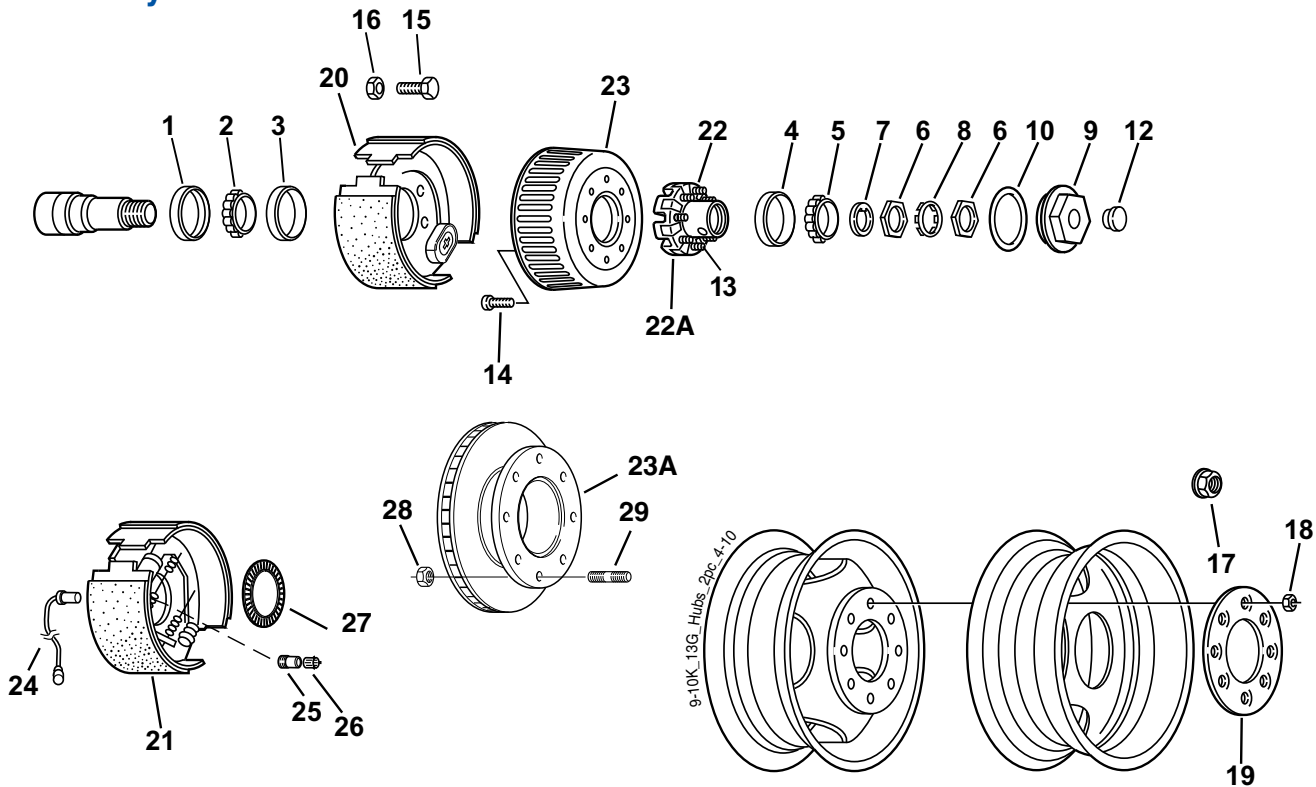
Item	Part No.	Description	Nut Torque
18*	006-109-00	5/8-18 90° Cone Nut	200 lbs.-ft
19*	033-052-01	Clamp Ring	
17	006-058-00	5/8-18 Flange Nut	300 lbs.-ft
13	007-115-00	5/8-18 Press-in Stud	

* Must use the 90° cone nut with the clamp ring. Alternate fastener is just the flange nut.

9K, 10K, #13G, #14T General Duty Two-Piece Hub Group



Before July 2009



Standard Oil Lube Parts

Item	Part No.	Description
1	010-051-02	Oil Seal
2	031-019-02	387A Inner Bearing Cone
3	031-019-01	382A Inner Bearing Cup
4	031-030-01	25520 Outer Bearing Cup
5	031-030-02	25580 Outer Bearing Cone
6	006-096-00	Spindle Nut (2)
7	005-070-00	Spindle Washer
8	005-071-00	Tang Washer
9	021-036-00	Oil Cap
10	010-050-00	'O' Ring
12	046-032-00	Oil Cap Plug
13	007-115-00	5/8-18 Wheel Stud
14	007-245-00	Drum Mounting Screw
15	007-116-00	Brake Mounting Bolt
16	006-017-00	Brake Mounting Nut
ns	005-008-00	Lockwasher

Hub & Drum

Item	Part No.	Description
22	008-288-03	Oil Hub w/Cups and Studs
23	009-044-01	Drum - Machined
ns	009-044-03	Drum - for ABS
ns	008-288-05	Oil Hub and Drum w/Cups and Studs

Hub & Rotor

Available on #13G – Not Offered on D90, D100G, #14T

Item	Part No.	Description
22A	008-288-07	Oil Hub w/Cups and Studs
23A	070-006-01	Brake Rotor
28	006-046-00	Rotor Mounting Nut
29	025-014-00	Rotor Mounting Stud

12 1/4" x 3 3/8" Brakes

Item	Part No.	Description
20	K23-450-00/K23-451-00	LH/RH Electric, FSA
21	K23-410-00/K23-411-00	LH/RH Hydraulic, FSA, Duo-Servo
21	K23-210-00/K23-211-00	LH/RH Hydraulic, RSA, Du-Servo w/Park
ns	K23-412-00/K23-413-00	LH/RH Hydraulic, FSA, Single-Servo
ns	K23-234-00/K23-235-00	LH/RH Hydraulic, Manual Adjust Single-Servo w/Park

ABS Components

Item	Part No.	Description
24	097-004-00	Sensor, Straight
25	024-204-00	Sensor Block
26	097-002-00	Sensor Clip
27	024-203-00	Tone Ring

Studs and Wheel Nuts

Item	Part No.	Description	Nut Torque
18*	006-109-00	5/8-18 90° Cone Nut	200 lbs.-ft
19*	033-052-01	Clamp Ring	
17	006-058-00	5/8-18 Flange Nut	300 lbs.-ft
13	007-115-00	5/8-18 Press-in Stud	

ns - not shown

* Must use the 90° cone nut with the clamp ring. Alternate fastener is just the flange nut.

One-piece hub/drum is not interchangeable with the two-piece hub & drum.

10,000 Lb. Heavy Duty Wheel & Hub Assembly



Tapered roller bearings

Computer matched to Dexter Axle system

Outer: 031-019-01 (382A) cup, 031-019-02 (387A) cone

Inner: 031-022-01 (394A) cup, 031-022-02 (395S) cone

Unitized Seal

Seals internally within the seal, with two sealing lips and press fitted to the spindle for improved performance.

12¼" x 4" high performance hydraulic brake. Electric and air brake, parking feature and uni-servo hydraulic brakes are also available.

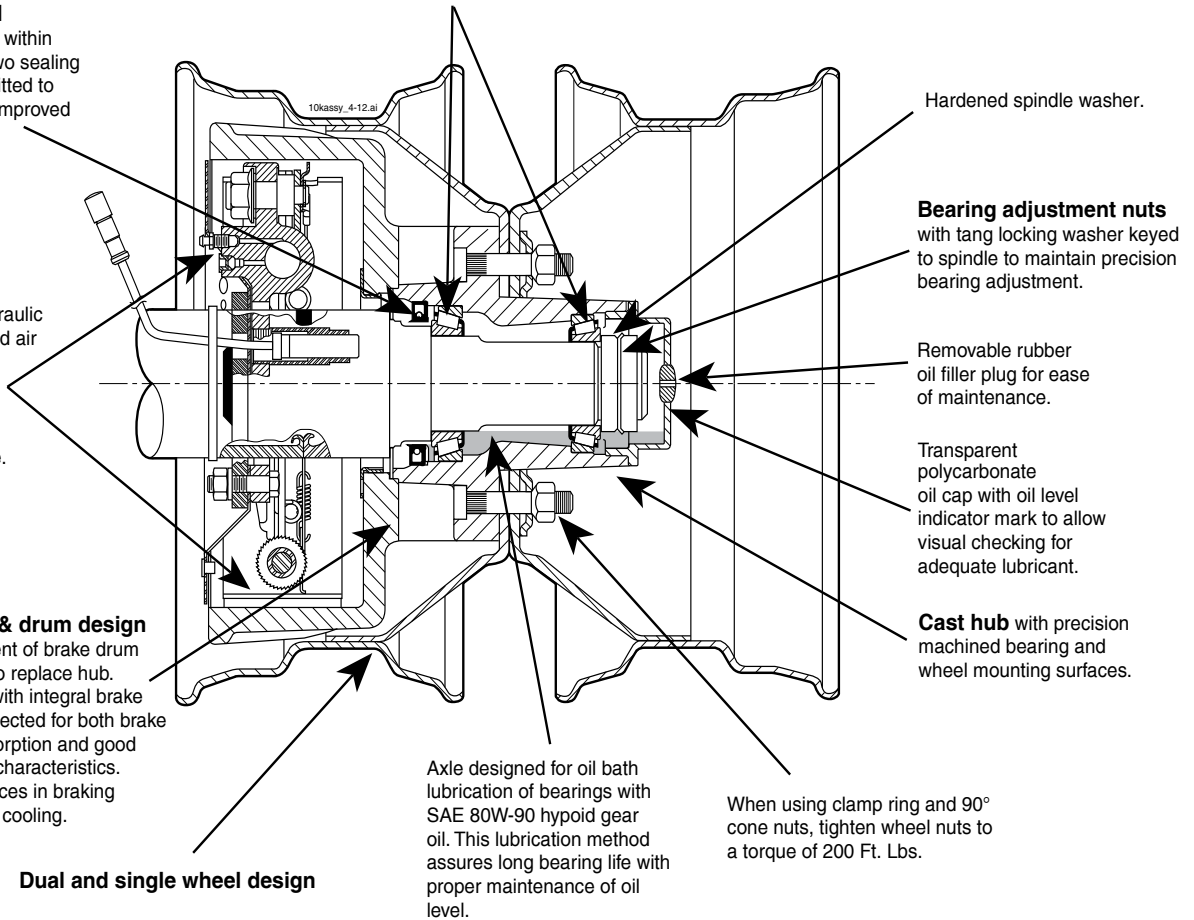
Two piece hub & drum design

permits replacement of brake drum without the need to replace hub. Cast brake drum with integral brake armature. Alloy selected for both brake energy (heat) absorption and good magnetic braking characteristics. Finned outer surfaces in braking area for maximum cooling.

Dual and single wheel design

Axle designed for oil bath lubrication of bearings with SAE 80W-90 hypoid gear oil. This lubrication method assures long bearing life with proper maintenance of oil level.

When using clamp ring and 90° cone nuts, tighten wheel nuts to a torque of 200 Ft. Lbs.



Hardened spindle washer.

Bearing adjustment nuts

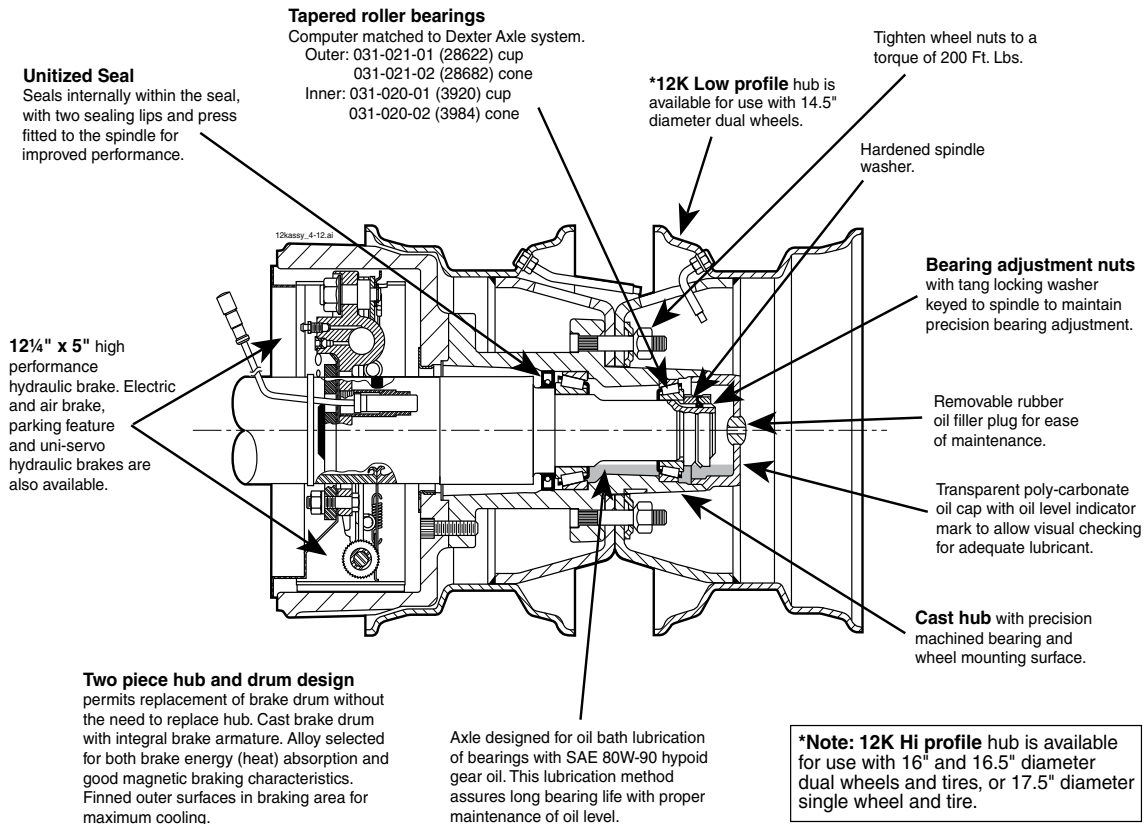
with tang locking washer keyed to spindle to maintain precision bearing adjustment.

Removable rubber oil filler plug for ease of maintenance.

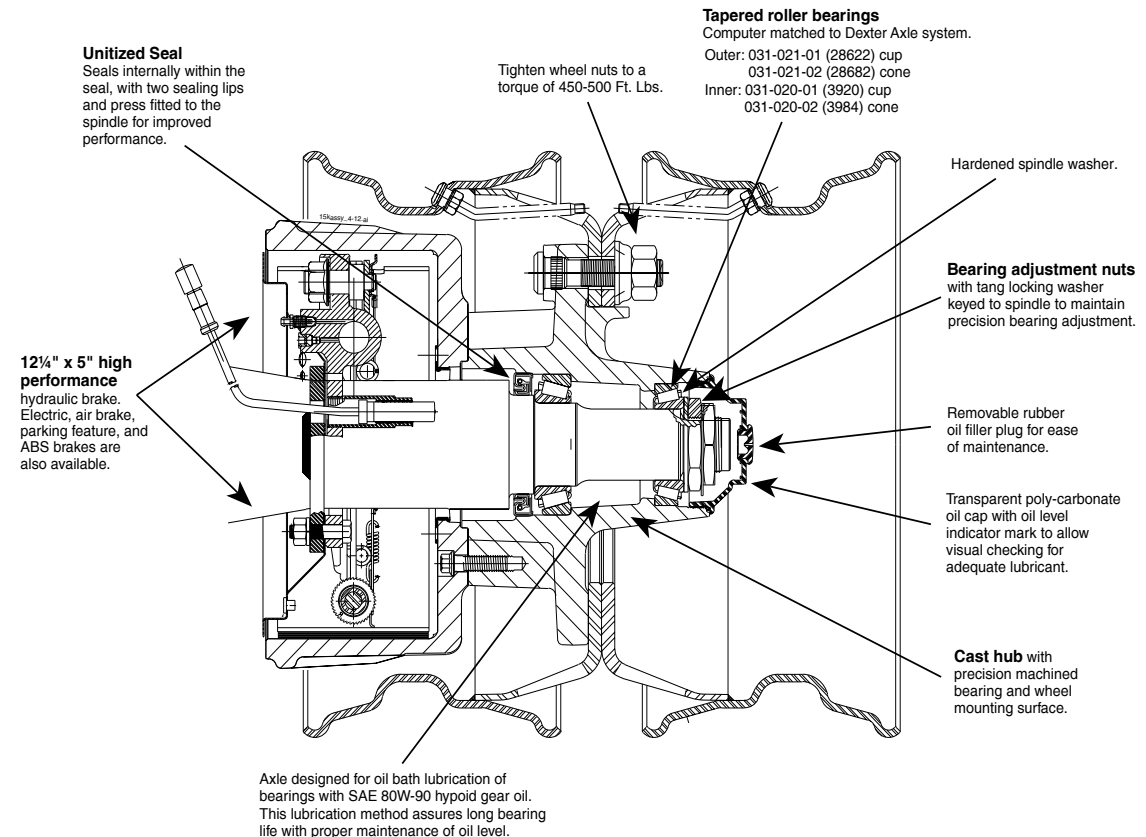
Transparent polycarbonate oil cap with oil level indicator mark to allow visual checking for adequate lubricant.

Cast hub with precision machined bearing and wheel mounting surfaces.

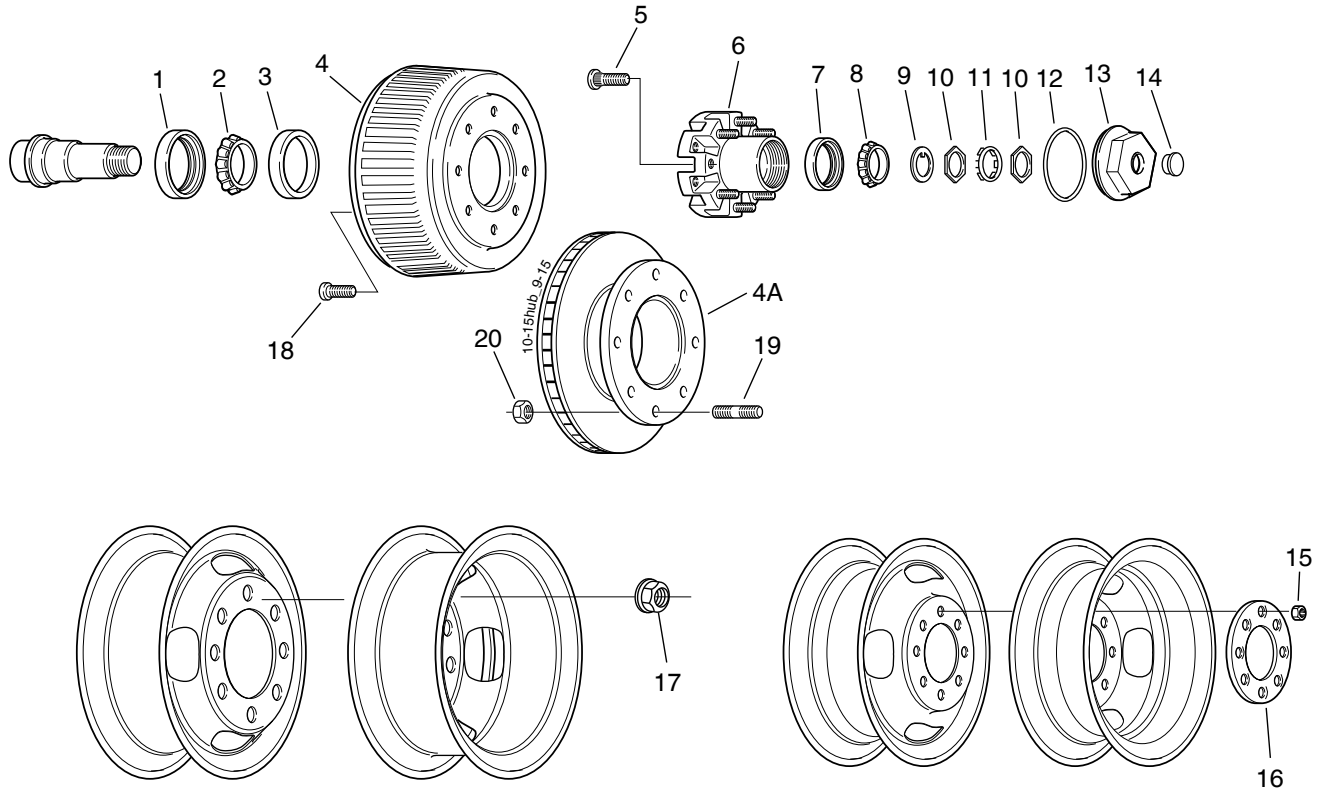
12,000 Lb. Wheel & Hub Assembly



15,000 Lb. Wheel & Hub Assembly



10K, 12K, 15K, #13D, and #14 Hub Groups



Item	Description	10K, #13D 8 on 6.50	10K, #13D Disc 8 on 6.50	12K Low-Profile 8 on 6.50	12K Hi-Profile 8 on 6.50	#14 Hi-Profile 8 on 6.50	#14 Disc 8 on 6.50	12K Disc 8 on 6.50	15K 8 on 275 mm
1	Unitized Oil Seal	010-056-00	010-056-00	010-056-00	010-056-00	010-056-00	010-056-00	010-056-00	010-056-00
2	Inner Bearing Cone	031-022-02 (395S)	031-022-02 (395S)	031-020-02 (3984)	031-020-02 (3984)	031-020-02 (3984)	031-020-02 (3984)	031-020-02 (3984)	031-020-02 (3984)
3	Inner Bearing Cup	031-022-01 (394A)	031-022-01 (394A)	031-020-01 (3920)	031-020-01 (3920)	031-020-01 (3920)	031-020-01 (3920)	031-020-01 (3920)	031-020-01 (3920)
4	Brake Drum	009-027-01	-	009-028-01	009-028-01	009-028-01	-	-	009-028-01
4	Brake Drum-ABS	009-027-03	-	009-028-05	009-028-05	009-028-05	-	-	009-028-05
4A	Brake Rotor	-	070-006-01	-	-	-	070-010-01	070-006-01	-
4A	Brake Rotor-ABS	-	070-006-02	-	-	-	-	070-006-02	-
5	Wheel Mounting Stud	007-115-00	007-115-00	007-115-00	007-115-00	007-115-00	007-115-00	007-115-00	007-194-00 (std) 007-195-00 (long)
6	Hubs w/Cups & Studs	008-214-05	008-214-06	008-216-08	008-214-08	008-422-03	008-422-04	008-214-10	008-401-05 (std stud) 008-401-06 (long stud)
7	Outer Bearing Cup	031-019-01 (382A)	031-019-01 (382A)	031-021-01 (28622)	031-021-01 (28622)	031-021-01 (28622)	031-021-01 (28622)	031-021-01 (28622)	031-021-01 (28622)
8	Outer Bearing Cone	031-019-02 (387A)	031-019-02 (387A)	031-021-02 (28682)	031-021-02 (28682)	031-021-02 (28682)	031-021-02 (28682)	031-021-02 (28682)	031-021-02 (28682)
9	Spindle Washer	005-060-00	005-060-00	005-060-00	005-060-00	005-060-00	005-060-00	005-060-00	005-060-00
10	Spindle Nut	006-084-00	006-084-00	006-084-00	006-084-00	006-084-00	006-084-00	006-084-00	006-084-00
11	Tang Washer	005-059-00	005-059-00	005-059-00	005-059-00	005-059-00	005-059-00	005-059-00	005-059-00
12	Oil Cap "O" Ring	010-050-00	010-050-00	010-050-00	010-050-00	010-050-00	010-050-00	010-050-00	010-050-00
13	Oil Cap	021-036-00	021-036-00	021-036-00	021-036-00	021-036-00	021-036-00	021-036-00	021-036-00
14	Oil Cap Plug	046-032-00	046-032-00	046-032-00	046-032-00	046-032-00	046-032-00	046-032-00	046-032-00
15	Wheel Nut	006-109-00	006-109-00	006-109-00	006-109-00	006-109-00	006-109-00	006-109-00	-
16	Wheel Clamp Ring	033-052-01	033-052-01	033-052-01	033-052-01	033-052-01	033-052-01	033-052-01	-
17	Flange Nut (swivel)	006-209-00	006-209-00	006-209-00	006-209-00	006-209-00	-	006-209-00	006-118-00
18	Drum Mounting Screw	007-244-00	-	007-244-00	007-244-00	007-245-00	-	-	007-244-00
19	Rotor Mounting Stud	-	025-014-00	-	-	-	-	025-014-00	-
20	Rotor Mounting Nut	-	006-046-00	-	-	-	-	006-046-00	-
21	Disc Mounting Screw (ns)	-	-	-	-	-	007-292-00	-	-

ns - not shown